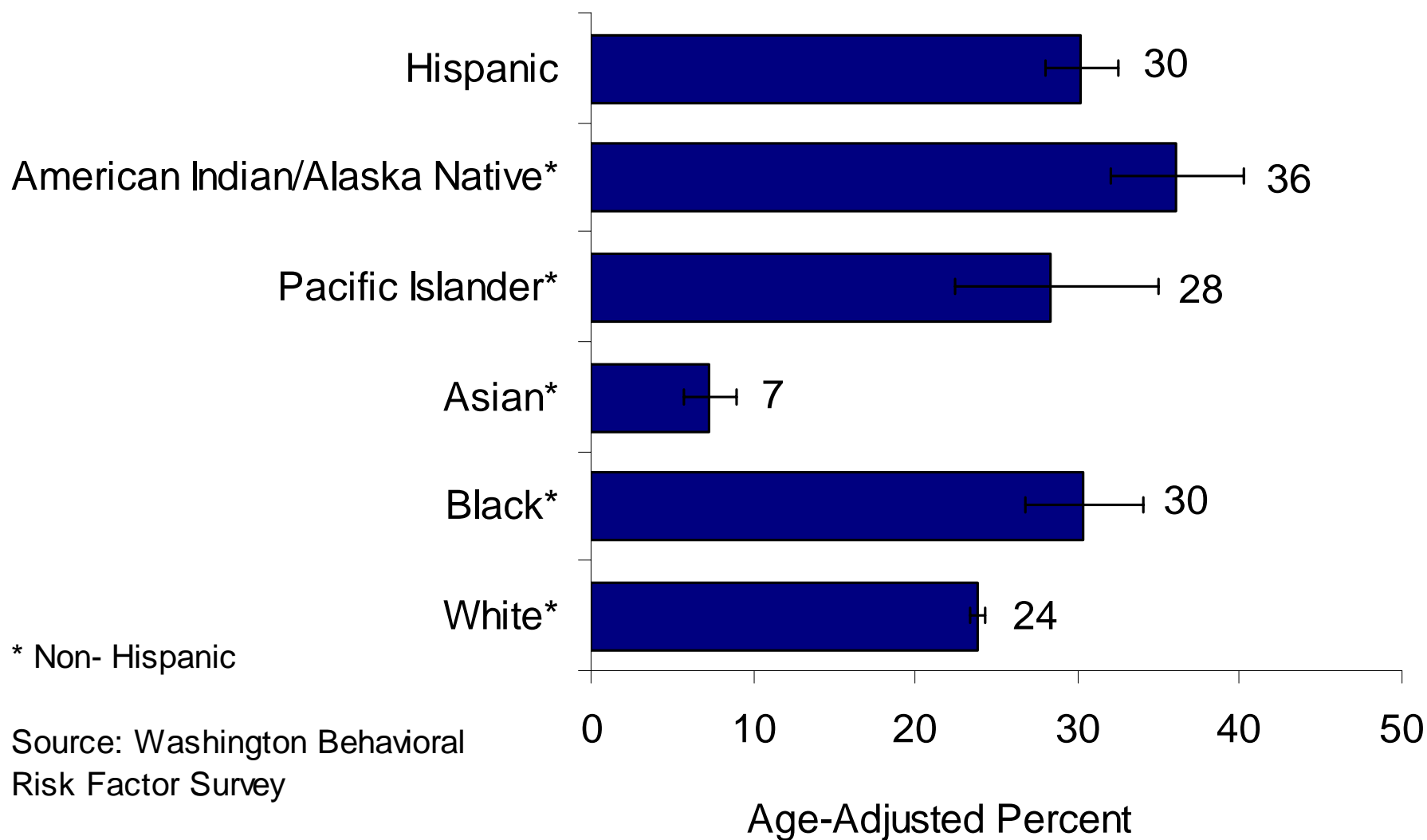


Obesity Among Black Adults in Washington State 1990 - 2007

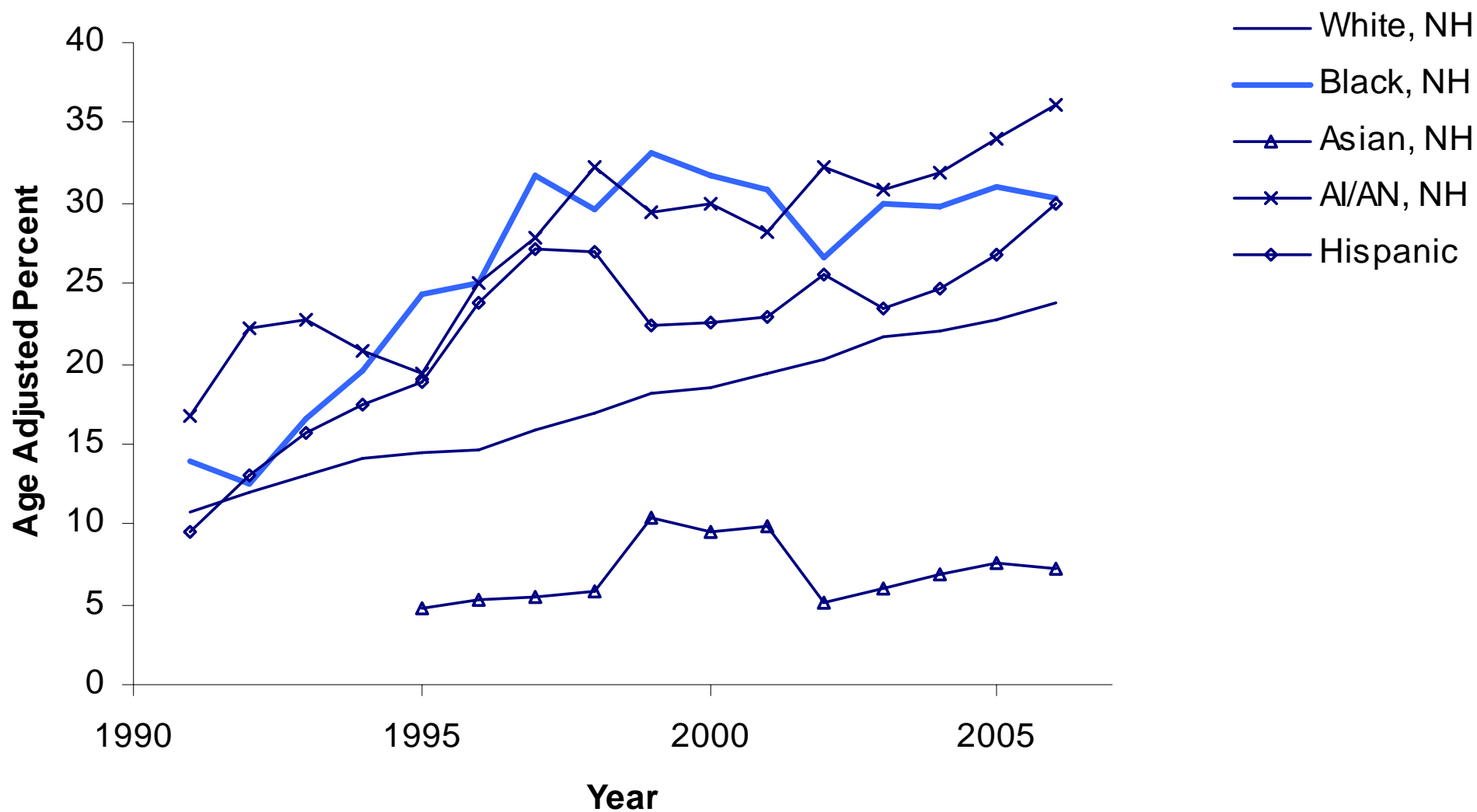
Behavioral Risk Factor
Surveillance System (BRFSS)

Obesity Among Adults by Race & Hispanic Origin in Washington, 2005-2007

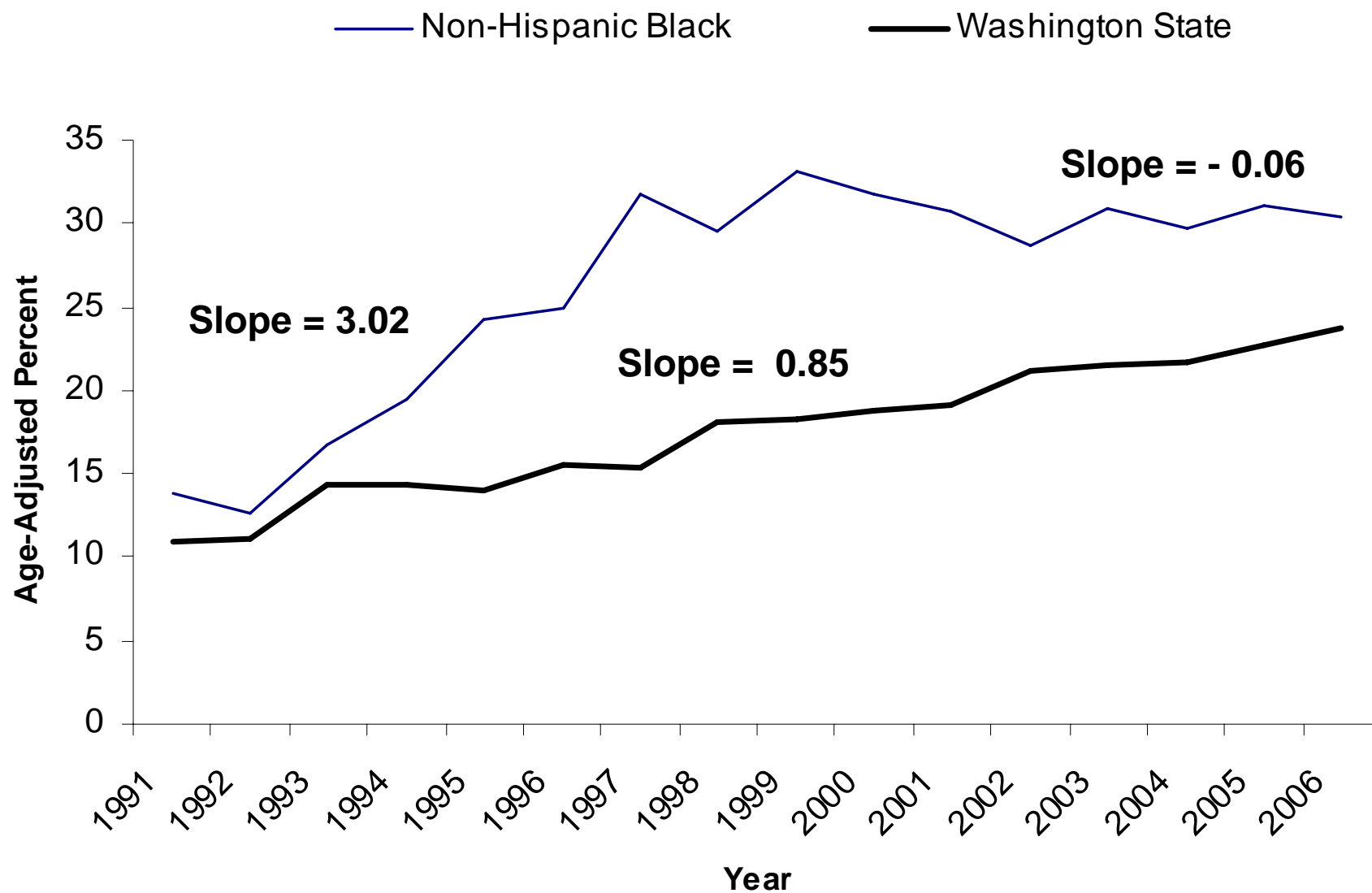


Obesity prevalence by race / ethnicity in Washington State

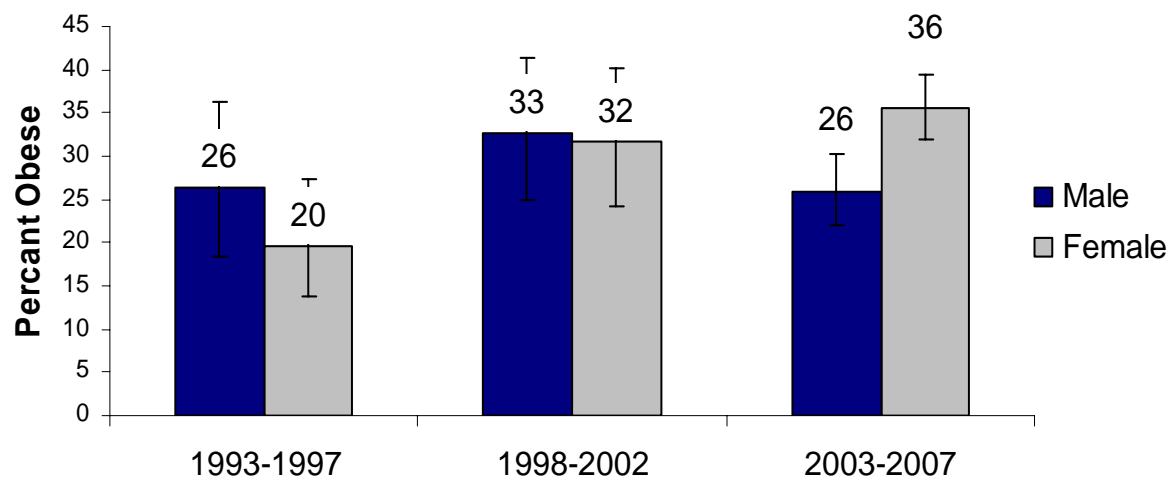
3 year rolling averages 1990-2007



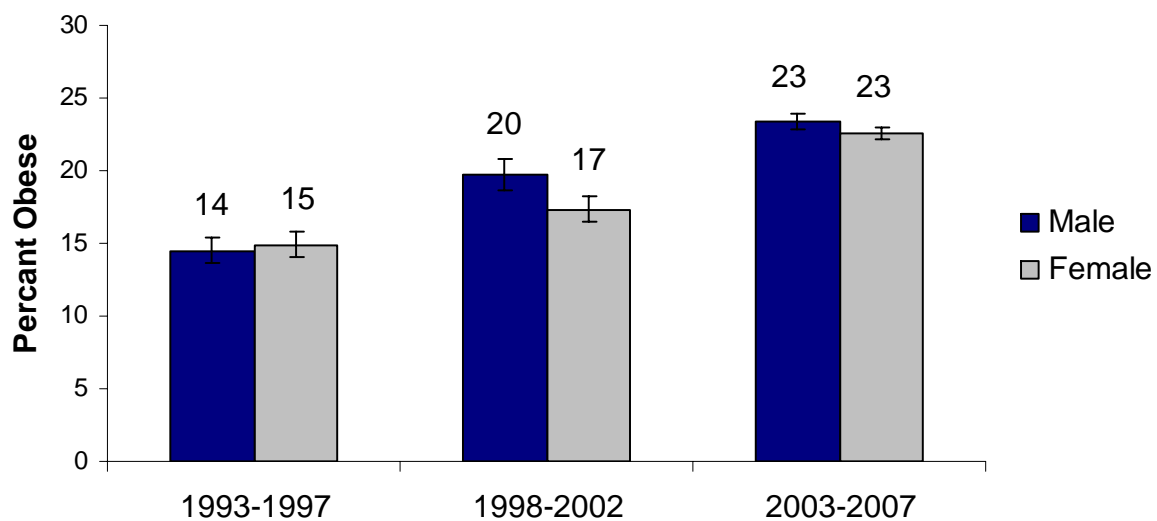
Obesity Among Washington Adults by Race - 3 year averages, 1990 - 2007



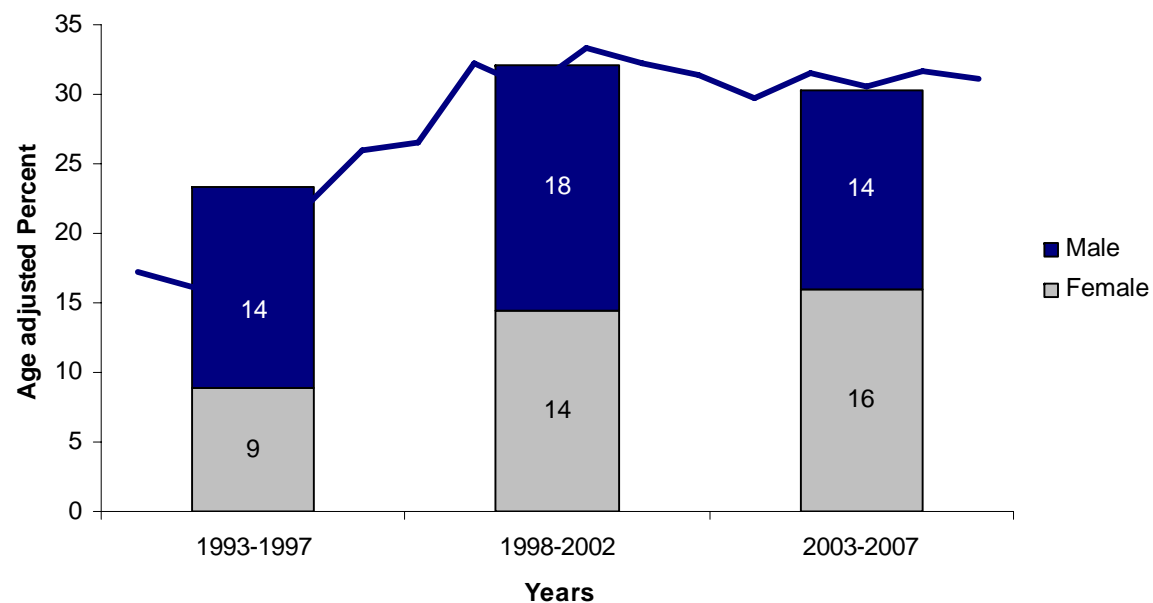
Obesity Among Black Adults in Washington State by Sex



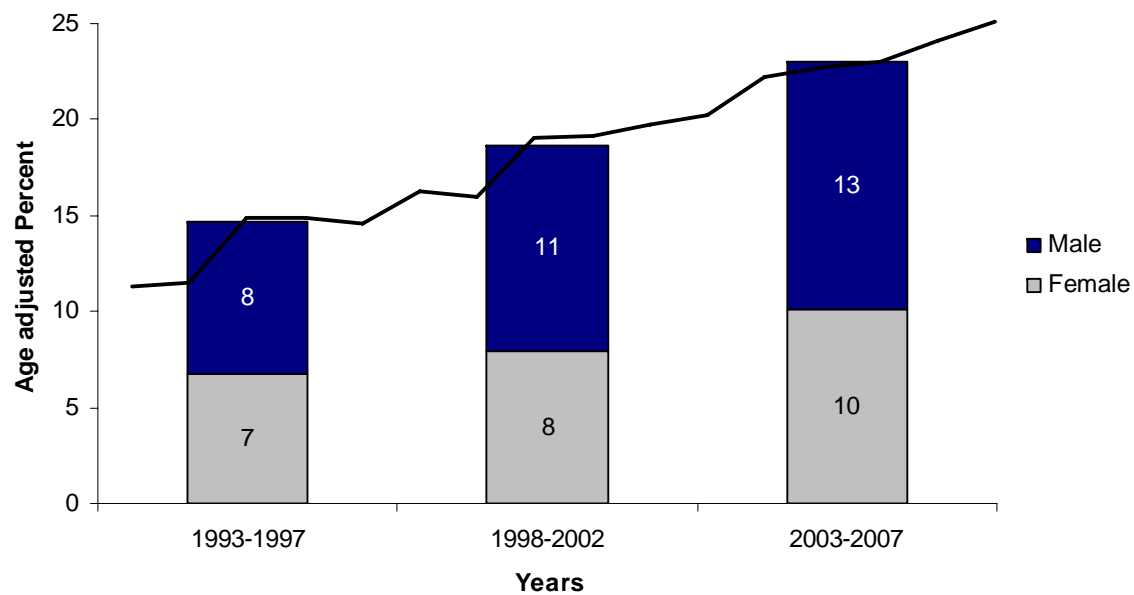
Obesity Among All Adults in Washington State by Sex



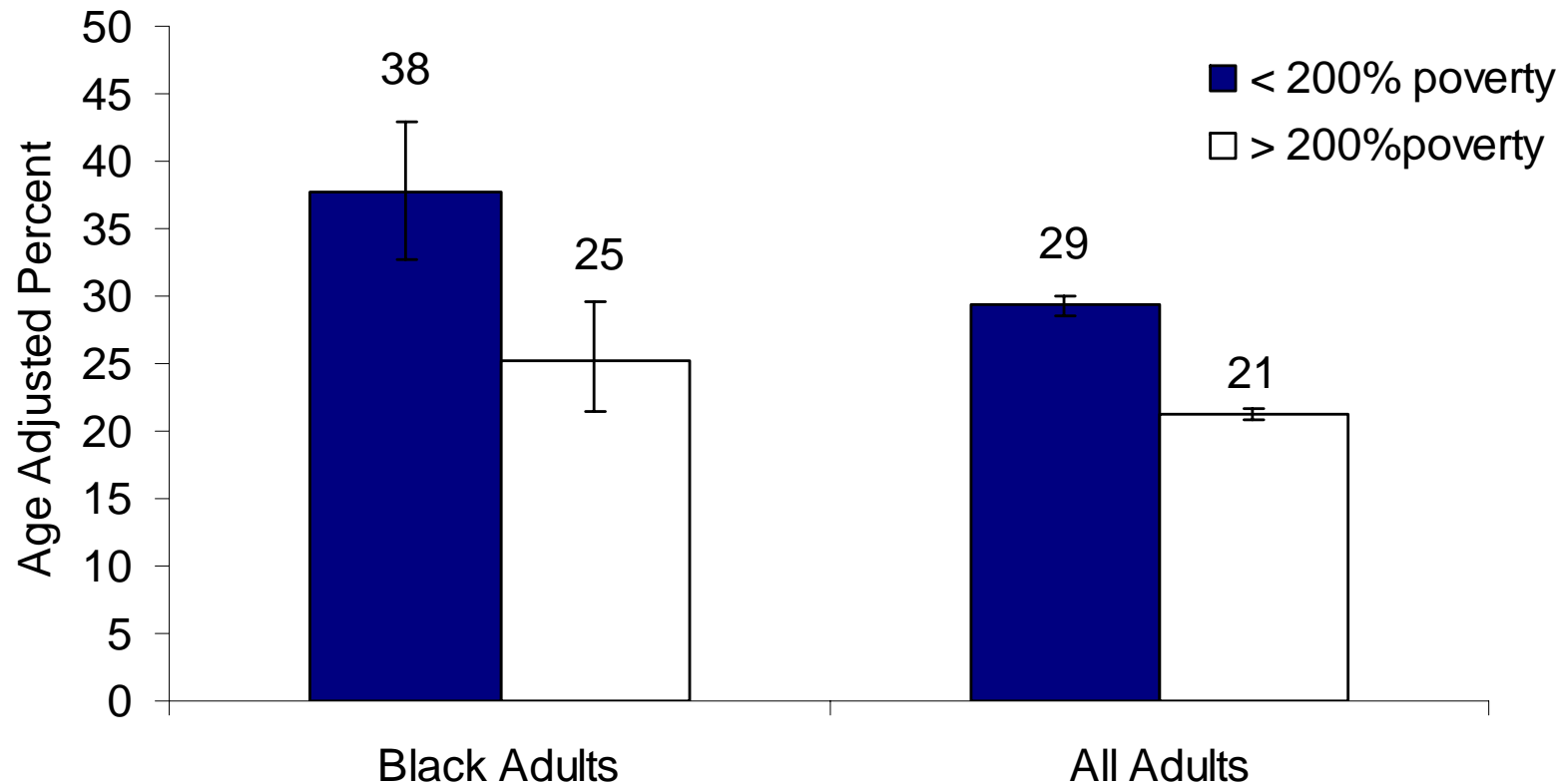
Obesity Among Black Adults in WA State by Sex



Obesity Among Adults in WA State by Sex



Obesity in Washington State by Income 2003-2007



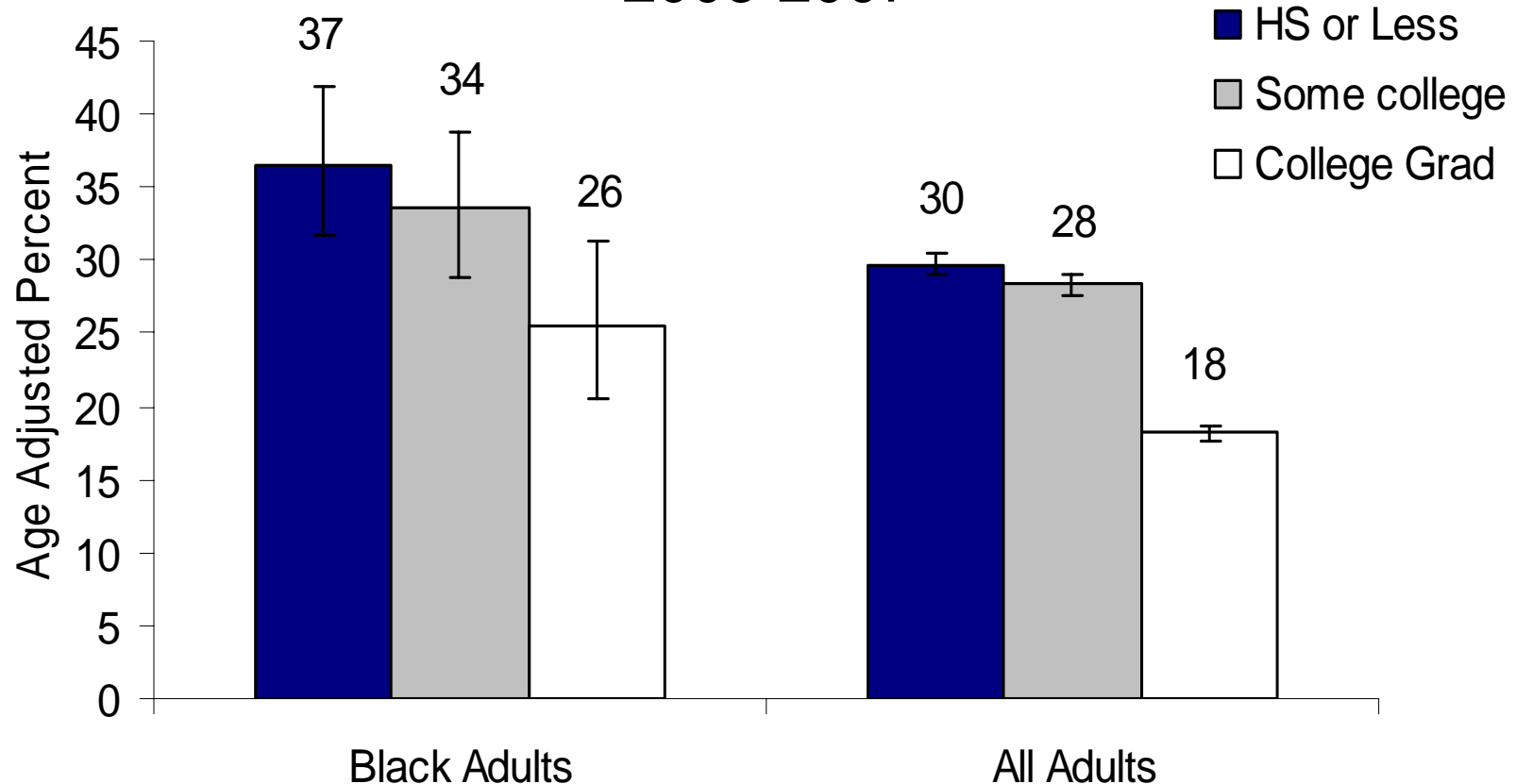
Excess risk Poor – Rich

Black: 13 %points All: 8 %points

Risk Ratio Poor / Rich

Black: 1.52 All: 1.38

Obesity in Washington State by Education 2003-2007



Excess risk HS – College

Black: 11 %points All: 12 %points

Risk Ratio HS / College

Black: 1.43 All: 1.67

Logistic Regression – Black Adults

- Main effects model – Obesity predicted by combined effect of several factors:

Obesity = time period + age + sex + working poor + college education

Working poor = income < 200% federal poverty level

Time periods = 1990 – 2000 and 2001 - 2007

- Effect Modifiers (Interaction effects) – One factor modifies the effect of another

time x sex*

time x working poor – not significant

time x college education*

***Significant effect**

Logistic Regression: Odds ratios of obesity among blacks, modified by time period, controlling for age.

Odds Ratio	1990-2000	2001-2007
Female	0.88	1.44
College Grad.	**	0.61
Income < 200% FPL	1.34	1.34

** No discernable effect

- The effect of sex on obesity prevalence among WA blacks has changed over time.
- Female sex was slightly protective in the early time period, but became a risk factor in the later time period.
- Sample sizes were too small to detect the effect of education in the early time period.

Logistic Regression: Odds ratios of obesity among all adults, modified by time period, controlling for age.

All Adults

Odds Ratio	1990-2000	2001-2007
Female	**	**
College Grad.	0.67	0.67
Income < 200% FPL	1.08	1.24
Black	1.45	1.45

Black Adults

Odds Ratio	1990-2000	2001-2007
Female	0.88	1.44
College Grad.	**	0.61
Income < 200% FPL	1.34	1.34

** No discernable effect

- In contrast to the black population, sex is not a predictor of obesity in the population at large.

Summary

- Obesity among black adults in Washington State is significantly higher than the general population
- Obesity among black adults in WA increased sharply through the 1990's but has held steady since 1999.
- The pattern of obesity by gender within the black population has changed over time, and differs from the statewide population

Discussion?

Contact Us

For more information contact:

Dennis McDermot

dennis.mcdermot@doh.wa.gov

(360) 236-3791

Marilyn Sitaker

marilyn.sitaker@doh.wa.gov

(360) 236-3463